

Can't contain us! 2009-2010



**HANCHER** 

THE  
UNIVERSITY  
OF IOWA

# Eye Piece by Rinde Eckert

Playwright/Director  
Actor/Composer

Friday and Saturday,  
February 5, 6, 12, and 13, 2010  
8:00 p.m.

Sunday,  
February 7 and 14, 2010  
2:00 p.m.

Mabie Theatre

---

*Sound Designer:* Bill Barclay  
*Assistant Director:* Brandon Bruce  
*Scenic Art / Projections Designer:* Kate Edmunds  
*Costume Designer:* Amanda Helland  
*Dramaturg:* Brett Janecek  
*Assistant Stage Manager:* Tresa Makosky  
*Stage Manager:* Gina Mantione  
*Associate Director:* Lisa Rothe  
*Assistant Designer:* Maylan Thomas  
*Scenic / Lighting Designer:* Bryon Winn

*Wardrobe: Chief:* Angela Dezen  
*Costume 1:* Kendra Bakke  
*Costume 2:* Samuel Hawkins  
*Costume 3:* Theresa Heitz  
*Costume 4:* Madelaine Patte  
*Costume 5:* Allee Petroski  
*Costume 6:* Chris Riley

*Light Board Op:* Audrey Thompson  
*Sound Board Op:* Steve Burdsall  
*Projections Op:* Matthew Vodicka

*Deck Chief:* Erin Clark  
*Stagehand 1:* Andy Lisle  
*Stagehand 2:* Rachel Sherman

**Ensemble** (in alphabetic order)

Gary Barth  
Maggie Blake  
Katie Consamus  
Courtney Eaddy-richardson  
Spencer Gilbert  
Jennifer Harris  
Emily Larson  
Sammi Levine  
Kendall Lloyd  
Krista Neumann  
Noah Parks  
Patrick Reynolds  
Josh Sazon  
Kurt Smith  
David Tull  
Reese Vrchoticky  
Samantha Wendell

**Musicians**

Nicolas Coffman  
Katie Klocke  
Olivia Rose  
Muzzy  
Joe Panganiban

---

There will be one intermission in the performance of Eye Piece.

This project is made possible in part by a grant from the Association of Performing Arts Presenters Creative Campus Innovations Grant Program, a component of the Doris Duke Charitable Foundation.

It is presented in collaboration with the UI Theatre Arts Department's Partnership in the Arts and the UI Division of Performing Arts' Creating the Future Initiative. It is also presented in collaboration with the University of Iowa Carver Family Center for Macular Degeneration and the University of Iowa Carver College of Medicine Writing Program.

---

H

ancher thanks the following programs  
and individuals for supporting  
and participating in the creation of *Eye Piece*

FUNDER

The Association of Performing Arts Presenters Creative Campus Innovations  
Grant Program, a component of the Doris Duke Charitable Foundation

PARTNERS

Rinde Eckert

The UI Theatre Arts Department's Partnership in the Arts  
The UI Division of Performing Arts' Creating the Future Initiative

Alan MacVey, Director of the Division of Performing Arts

The University of Iowa Carver Family Center for Macular Degeneration  
Dr. Ed Stone

The University of Iowa Carver College of Medicine Writing Program  
Margaret LeMay-Lewis and Dave Etler

Professor Steve Kuusisto

We extend our thanks to everyone who has worked on this project,  
aided with the organization of various related events,  
and helped us spread the word.

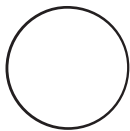
We also sincerely thank you for joining us for this performance.

eye

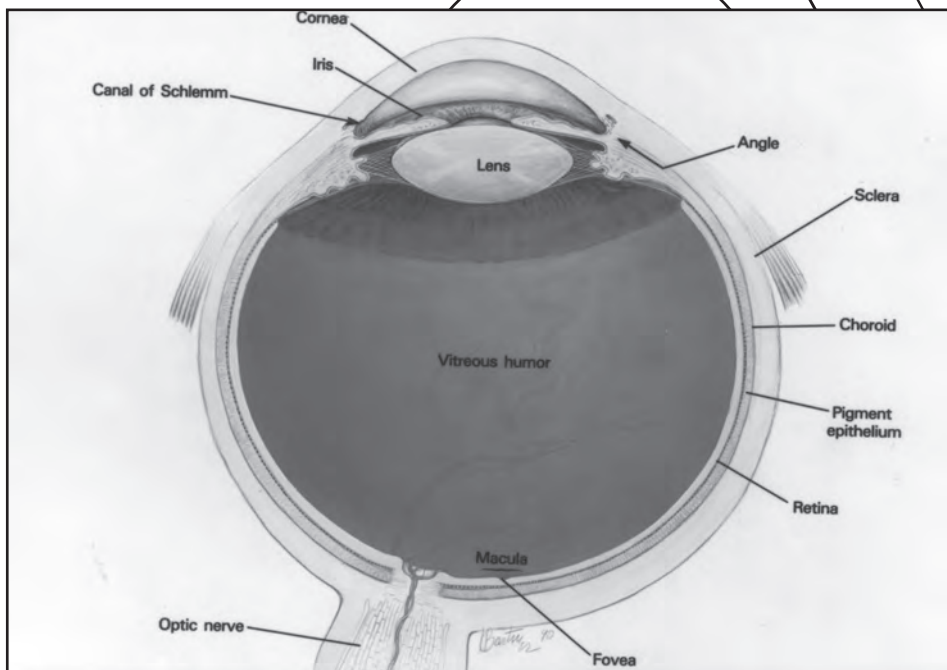
# Rinde Eckert



**RINDE ECKERT** (*Playwright / Director / Actor / Composer*) is a writer, composer, singer, actor, and director whose music, music theater, and dance theater pieces have been performed throughout the United States and abroad. Among them are: *Slow Fire*, an electric solo opera in collaboration with composer Paul Dresher; *Ravenshead*, a solo opera in two acts with music by Steven Mackey; *And God Created Great Whales*, produced by The Foundry Theater (Obie Award 2000); and *Highway Ulysses*, with American Repertory Theatre (Eliot Norton Award 2003). His music/theater piece *Horizon* had its New York premiere at New York Theater Workshop in 2007; it won the 2008 Lucille Lortel Award for Unique Theatrical Experience and was nominated for a Drama Desk Award as Outstanding Play. In March 2006, he premiered *Orpheus X* (2007 finalist for the Pulitzer Prize in Drama), again at ART. He was featured at Zankel Hall/Carnegie Hall in February 2006, performing his solo evening *An Idiot Divine*. Rinde is a recipient of the Marc Blitzstein Memorial Award for Lyricist/Librettist given by the American Academy of Arts and Letters. He is also the recipient of the 2009 Alpert Award in the Arts. He recently directed So Percussion's new piece *Imaginary City* at The Brooklyn Academy of Music. He lives in New York with his wife, playwright and actress, Ellen McLaughlin.



pieces



## PARTS OF THE EYE

### Cornea

The clear outer part of the eye's focusing system located at the front of the eye.

### Fovea

The center of the macula and gives the sharpest vision.

### Fundus

Interior posterior surface of the eyeball; includes retina, optic disc, macula, posterior pole. Can be seen with an ophthalmoscope.

### Iris

The colored part of the eye that regulates the amount of light entering the eye.

### Lens

A clear part of the eye behind the iris that helps to focus light, or an image, on the retina.

### Macula

The small sensitive area of the retina that gives central vision. It is located in the center of the retina and contains the fovea.

### Optic Nerve

A bundle of more than one million nerve fibers that carries visual messages from the retina to the brain.

### Pupil

The opening at the center of the iris. The iris adjusts the size of the pupil and controls the amount of light that can enter the eye.

### Retina

Light sensitive nerve tissue in the eye that converts images from the eye's optical system into electrical impulses that are sent along the optic nerve to the brain, to interpret as vision.

### Retinal Pigment Epithelium

Pigment cell layer just outside the retina that nourishes retinal visual cells.

### Vitreous Gel

A clear gel that fills the inside of the eye.

## EYE DISEASES AND DISORDERS

### Cataract

Opacity or cloudiness of the crystalline lens, which may prevent a clear image from forming on the retina. May be congenital or caused by trauma, disease, or age.

### Congenital

Present at birth.

### Drusen

Tiny, white hyaline deposits on Bruch's membrane. Common after age 60; sometimes an early sign of macular degeneration.

### Leber's Congenital Amaurosis

Blindness or near-blindness in both eyes. May be accompanied by nystagmus (involuntary eye movements), sensitivity to light and sunken eyes.

### Macular Degeneration

Group of conditions that include deterioration of the macula, resulting in a loss of sharp central vision. Two general types: "dry," which is usually evident as a disturbance of macular pigmentation and deposits of yellowish material under the pigment epithelial layer in the central retinal zone; and "wet" in which abnormal new blood vessels grow under the retina and leak fluid and blood, further disturbing macular function. Most common cause of decreased vision after age 50.

### Pathological

Caused by or involving disease.

### Retinitis Pigmentosa

Progressive retinal degeneration in both eyes. Night blindness, usually in childhood, is followed by loss of peripheral vision, progressing over many years to tunnel vision and finally blindness.

### Stargardt's Disease

Macular degeneration characterized by central vision loss with minimal changes visible with an ophthalmoscope. Later, the macula may show pigment clumping surrounded by a hammered-metal appearance. Occurs between ages 6-20. Hereditary.



## Caduceus

A short herald's staff, entwined by two serpents in the form of a double helix, topped with two wings, is a North American medical symbol with origins in Greek myth. While the caduceus is commonly associated with Hermes, one myth links the wand to Tiresias. As he was travelling in the hills outside of Thebes, Tiresias came upon two copulating serpents. He interrupted their ceremony with his herald's staff and immediately transformed into a woman. A Swiss medical printer, Johann Frobenius, is the first known individual to use the caduceus as a medical symbol with the biblical inscription: "Be ye therefore wise as serpents and harmless as doves" (Matthew 10:16).

## Tiresias

A Greek mythological figure, Tiresias is famous for his clairvoyance despite his blindness. After he sided with Zeus in a debate over which gender receives more sexual pleasure, Hera struck him blind for his impiety. Although Zeus could not reverse Hera's curse, he granted Tiresias seven lives, and he became a trusted advisor to the first seven rulers of Thebes, including the ill-fated Oedipus, and a prophet of Apollo. Tiresias was the first to reveal to Oedipus that he has slept with his mother and killed his father, but Oedipus refused to believe that Tiresias's vision was correct.

In another myth, One day while walking in the hillsides of Thebes, Tiresias came upon a pair of copulating snakes. He struck the snakes with his herald's staff to interrupt the coitus. He immediately transformed into a woman. After seven years as a woman, Tiresias stumbled upon another pair of copulating snakes and this time chose to not interrupt the sexual rite. He transformed back into a man.

## Oedipus

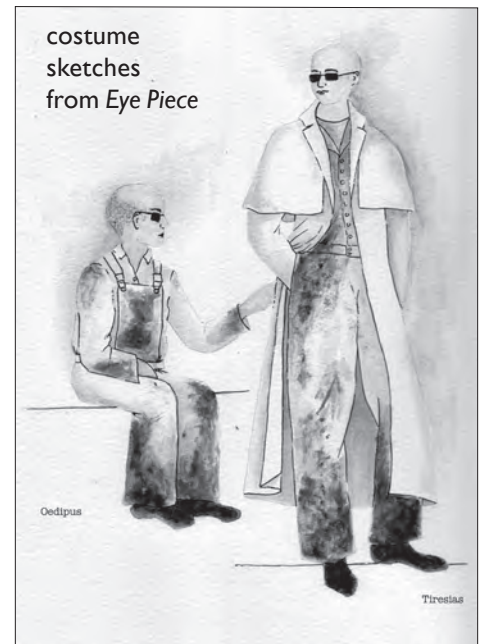
Literally "swollen-footed," Oedipus was pierced by his ankles and thrown in the hills of Thebes after his mother, Jocasta, learned that he was destined to marry her and kill his father, Laus. He was saved and raised in a neighboring kingdom. When a drunken man revealed the prophecy to Oedipus he fled his supposed childhood home. On the road to Thebes, Oedipus unknowingly killed his father but solved the Sphinx's riddle to save Thebes from a plague of infertility. He then became the King of Thebes and married the widowed queen, Jocasta, not knowing that he had fulfilled the prophecy. After having several children with Jocasta, Oedipus discovered the truth and stabbed his eyes out with her brooch. He was exiled from the land and lived to a very old age.

## An Excerpt from Eye Piece:

Oedipus: Fate didn't have it in for you from the beginning. Look at me, at my life. Right from the start. Genetics Tiresias. It doesn't spare the innocent. Your parents are condemning you right from the start, shoving you out there into the wilderness half blind to fight off the wolves with whatever stick you can find in the dark.

Tiresias: Nonsense. Genetics had nothing to do with it.

Oedipus: I'm just saying I was doomed from the start.



Tiresias: You chose your blindness.

Oedipus: That was the only pure act of will in my whole life. The fates didn't see that one coming.

Tiresias: Bravo

Oedipus: Surprised the hell out of the fates. They had it all planned out. They wanted to see me suffer. They wanted to look into my eyes and watch the panic set in, watch the humiliation, the gathering cloud of madness. They wanted to see that cataract form, that milky eclipse of my sanity, my clarity, my vision. So I went native on them, the bitches. I chose total eclipse. I cut to the chase, to the final act and the Fates turned their backs, lost interest, and finally I was free. Darkness freed me. I was no longer interesting, no longer tragic, just pathetic, a comic figure, a rag of a thing, mythologically done, my story no longer important, the post Oedipus Oedipus. Not Oedipus at all, just some blind clown in someone else's story, a minor character in someone else's drama, and free of the Fates. Unhurt, an arid moon orbiting whatever planet the God's have their eye on. Some thing you see in the night, known only by reflection, a dust ball in the dark, misshapen asteroid, tumbling along for eternity in the circus of the heavens. That's it: Oedipus – blind driver of the clown car in the circus of the mythos.



## Bringing Eye Piece into focus: A timeline of Hancher's Creative Campus Innovations Program project

The Creative Campus Innovations Program is administered by the Association of Performing Arts Presenters and funded by the Doris Duke Charitable Foundation.

**November 2006** — Hancher submits an application to the Creative Campus Innovations Program.

**March 2007** — Hancher is announced as one of just eight presenters that receive Creative Campus grants.

**September 2007** — An introductory meeting of project partners is held and Rinde Eckert's collaboration with Dr. Ed Stone and the University of Iowa Carver Family Center for Macular Degeneration begins. This meeting also marks the beginning of Eckert's creative collaboration with Stephen Kuusisto, a UI English department faculty member who has been blind since birth.

**October 2007** — Hancher presents Rinde Eckert's *Horizon*.

**November 2007** — Eckert returns to campus for the first of many visits. These visits will lead to important discussions that inform *Eye Piece*, including conversations with faculty in the biomedical engineering, cognitive psychology, and physics departments.

**December 2007** — Members of the Hancher staff join other Creative Campus grantees to meet with staff from the Doris Duke Charitable Foundation and the Association of Performing Arts Presenters in Washington, D.C.

**April 2008** — Hancher announces *Eye Piece* as part of the 2008-2009 season. Eckert returns to campus.

**June 2008** — Hancher Auditorium and the wider region suffer significant damage due to record flooding. *Eye Piece* is removed from the 2008-2009 schedule.

**December 2008** — Members of the Hancher staff again join other Creative Campus grantees to meet with staff from the Doris Duke Charitable Foundation and the Association of Performing Arts Presenters in Washington, D.C.

**April 2009** — Eckert returns to campus to continue his conversations and collaborations.

**July 2009** — Eckert returns to campus.

**Fall 2009** — Eckert returns to campus to continue his collaborations with Stone, Kuusisto and others.

**October 2009** — The play is cast and Eckert creates an ensemble of students from the University of Iowa Division of Performing Arts. Students in the University of Iowa Carver College of Medicine Writing Program participate in an exercise built around the themes of the play and participate in discussions with Eckert.

**January 2010** — *Eye Piece* rehearsals continue in earnest while Eckert and other project partners participate in a series of related residency events that delve into the themes and sources of the play.

**February 2010** — *Eye Piece* premieres in Mabie Theatre on the UI campus.

# OLIECE

## Meet the Artists

**BILL BARCLAY** (*Sound Designer*) is a Boston-area composer and actor; artistic associate and member of the Resident Acting Company at the Actors' Shakespeare Project in Boston; company member of The Mercury Theatre in Colchester, U.K.; and resident music director of Shakespeare & Company in Lenox, Massachusetts, where he is also an actor, director, and lecturer. He designs and performs regionally and for television (Showtime, PBS) and has premiered three original music theatre works. He was awarded a Meet the Composer grant and a Fox Foundation Resident Actor Fellowship, the nation's largest grant for actors. He graduated with an M.F.A. from Boston University and received training/study at the National Theatre Institute; Shakespeare & Company; Dell'Arte in Bali, Indonesia; Universita di Siena, Italy; and Royal Shakespeare Company, England.

**BRANDON BRUCE** (*Assistant Director*) is a third year M.F.A. directing student at The University of Iowa where he has directed *Reefer Madness! The Musical*, *Akarui*, *White Elephant*, *The ToyMaker's War*, *Sam Shepard's Chicago*, and *Thief Unseen*. Other directing projects include *The Little Foxes* at Chicago's Shattered Globe Theatre (nominated for three Jeff Awards

including Best Production), *The Skin of Our Teeth* (BackStage Theatre – Jeff Award), and *Tango* (Chopin Theatre – Best Director by Chicago's Orgie Awards). This spring, he will be directing the new musical *The Boy in Black* by Tony Meneses and Dan Roeder. He thanks Kaptin, Lucy, and Cheryle for their love and support. [www.brandon-bruce.com](http://www.brandon-bruce.com)

**KATE EDMUNDS** (*Scenic Art / Projections Designer*) has designed throughout the United States for over thirty years. Her work has been seen at American Repertory Theater, Baltimore's CenterStage, D.C.'s Arena Stage, Manhattan Theater Club, The Goodman Theater, the Huntington, the Mark Taper Forum, Seattle Rep., Indiana Rep. and Steppenwolf, among others. In the San Francisco Bay Area she has designed over 25 productions at the American Conservatory Theater including *Angels in America I & II*, *Hecuba* (starring Olympia Dukakis), *The Tempest*, and *Uncle Vanya*. She designed many, many productions at Berkeley Repertory Theater including *Twelfth Night*, *Endgame*, *The Winter's Tale*, *Slavs!*, *The Misanthrope*, and *Fuente Ovejuna*. Other Bay Area venues include the Magic Theater, San Jose Repertory, Theatreworks, and

Shakespeare Santa Cruz. Ms. Edmunds recently designed the permanent exhibit Technology Benefitting Humanity at the San Jose Tech Museum. She was production designer on Philip Gotanda's film *Life Tastes Good*, an award-winner at the Sundance festival. A graduate of the Yale School of Drama, she taught for 13 years at UC Berkeley and currently is associate professor of design at UC Santa Cruz.

**AMANDA HELLAND** (*Costume Designer*) is a second year M.F.A. candidate in costume and scenic design from San Diego, California. Her most recent work was the scenic design for *Book of Liz* at The University of Iowa. Her past shows include costume design for *Waiting for Lefty* at the M.F.A. Director's Festival and scenic design for *Decline of the Front Porch* at the 2009 New Play Festival. She has worked with the Abilene Shakespeare Festival, designing costumes for *As You Like It* and with the Lamb's Players Theatre in California working on the properties for *Amadeus*, the premier of *Five Cups of Coffee*, *Joseph...Dreamcoat*, and *Cold Comfort Farm*, as well as designing props for *Susan and God*.

# Let us know what you think!

Thank you for attending this performance of *Eye Piece*. We would be very grateful for your feedback.

If we have your email address on file, we will be sending you a brief survey in the coming days. Copies of the survey will also be available as you leave following the performance.

Individuals who complete the survey will be entered to win one of four \$100 Hancher gift certificates.

Thank you for your participation!

**BRETT JANECEK** (*Dramaturg*) is a current Iowa Arts Dramaturgy Fellow, a graduate student in the Iowa Playwrights Workshop, and a course instructor. He has worked for Actors Theatre of Louisville, the New York Public Theatre/Summer Shakespeare Festival, Lyric Opera of Chicago, About Face Theatre, and Writer's Theatre. Current projects in development include an Iowa Partnership in the Arts collaboration with choreographer Martha Clarke, a queer retelling of the Catholic mass, and various new play projects at The University of Iowa. Brett has a B.A. in theatre from Northwestern University and a background in political theory from the University of Notre Dame.

**TRESA MAKOSKY** (*Assistant Stage Manager*) is in her first year as a stage manager in The University of Iowa M.F.A. Theatre Arts program. Since 2006, she has stage managed for several Chicago storefront theater companies, including Adventure Stage Chicago, Backstage Theater Company, and Piccolo Theatre Company. She has spent seven summer seasons as stage manager for Crossroads Repertory Theatre. After graduating from Indiana State University in 2004, she spent a season in Texas as a stage management intern at the Dallas Theater Center. She has toured to Germany and Ireland to produce theater with the SummerStage International Initiative.

**GINA MANTIONE** (*Stage Manager*) is in her third year of the M.F.A. stage management program at The University of Iowa. She has been stage manager for *Trigger*, *The Collection*, *Free Gift*, *Toymaker's War*, *Three Sisters*, *White Elephant*, *Orpheus in the Underworld* (opera), *Lost Sharks*, and *Eye Piece*. Upcoming projects include *The Boy in Black* and Iowa New Play Festival. Professionally, she has worked for Iowa Summer Rep, as the resident stage manager for the Know Theatre of Cincinnati from 2005–2007, education tour manager for the Cincinnati Opera, and program coordinator for the 2005 and 2006 Cincinnati Fringe Festivals. She holds a B.A. in theatre arts from Rutgers University.



**LISA ROTHE** (*Associate Director*) recently became the director of Off-site Programs and Partnerships at the Lark Play Development Center in New York City. As a director, recent credits include *Interpreting William* (Indiana Repertory), *Looking for the Pony* (Synchronicity @ Seven Stages in Atlanta), *Penelope* (Getty Villa, Gallatin School in NYC, Princeton University), *Ah, Wilderness!* (Chautauqua Theatre Company), and *Couldn't Say* (MITF - Best Director Award), as well as productions for NYMF and SPF. She received an EST/ Sloan Foundation grant with composer Kim Sherman and librettist Margaret Vandenburg for work on *Ada*, a new opera. She is a member of the Women's Project Director's Lab, Epic Theatre Center, Drama League alum, and Fox Fellow. She was a guest director for NYU Graduate Acting, Juilliard and Yale School of Drama. She has an M.F.A. in acting from NYU.

# Yes! Pro

**MAYLAN THOMAS** (*Assistant Designer*) is an M.F.A. design candidate with a dual focus in lighting and scenic design. While at The University of Iowa, he has created the scenic designs for *A History of Bad Ideas*, *Painted Skin*, *Chicago*, *Walking Backwards*, *La Lechera*, The Undergraduate Directors Festival, and in the spring he will be designing *Dry* and *Boy in Black*. He was, from 2004 until 2007, the resident designer and tour manager for the United States Army Solider Show.

**BRYON WINN** (*Scenic / Lighting Designer*) is an associate professor of design and director of theatre for the Department of Theatre Arts at The University of Iowa. He has designed lighting and/or scenery for hundreds of theatre, dance, and corporate events, which includes over 40 premiere productions. His design work for the theatre has been seen at Portland Stage Company, Trinity Rep, Theatre de la Jeune Lune, Axis Theatre, Intersection for the Arts, Miranda Theatre Company, Utah Musical Theatre, Middlebury College, and Iowa Summer Rep. Bryon is a member of United Scenic Artist 829.

**GARY BARTH** (*Actor*) a native of Iowa City, received his acting and improvisation training in the San Francisco Bay Area, where he lived and worked for many years. He also lived and worked for a time in Los Angeles. Gary was most recently seen in last spring's New Play Festival, wherein he portrayed troubled patriarch Laslow Gallagher in *La Lechera*.



**MAGGIE BLAKE** (*Actor*) is a sophomore and is honored to work with this cast and crew on this show. *Eye Piece* has given her an opportunity to grow exponentially as an actor with every rehearsal. She was so happy to be a part of such an organic process that taught her how to truly be a part of an ensemble. She wishes to thank the whole cast for being the best acting textbooks she could ever read and for being wonderful people on top of it all. Thank you to Rinde for this opportunity, and thank you to the super-fabulous stage management team.



**KATIE CONSAMUS** (*Actor*) is a first year acting M.F.A. candidate. She recently arrived here from St. Louis in tow with happy memories performing at the New Jewish Theatre, Imaginary Theatre Company, Ozark Actors Theatre, Saint Louis University Theatre, the Slightly Askew Theatre Ensemble, and Avalon Theatre. She is a proud member of Actors Equity. In her spare time, she enjoys bad dancing.



**COURTNEY EADDY-RICHARDSON** (Actor) is a first year M.F.A. actor at The University of Iowa. She received her undergraduate degree from Eastern Michigan University in communications and theatre Arts and in African American studies. She counts herself fortunate to be a part of this production. She would like to express great thanks to her family for supporting her and always believing that she is great.



**SPENCER GILBERT** (Actor) is truly honored to have been accepted into this cast. He hopes to do his cast and crew justice through this performance, and hopes you enjoy the show.



**JENNIFER HARRIS** (Actor) is a first year graduate student. She is thrilled about attending this remarkable university, enthusiastic about working with Rinde, and grateful for being a part of this magnificent production. She thanks God for all he has done and continues to do and, also, thanks her wonderful professors and 13 colleagues for making her first semester in Iowa one to never forget. This is her first mainstage performance and looks forward to being a part of many more. **POWER, PASSION, PROJECTION, PURPOSE. THEATRE!!!!**



**EMILY LARSON** (Actor) is currently completing her final semester of undergraduate coursework here at the University of Iowa. She will graduate this spring with degrees in both Theatre and English. She is extremely grateful to Rinde and the entire cast for welcoming her as a belated member of this dynamic ensemble.



**SAMMI LEVINE** (Actor) is thrilled to be a part of *Eye Piece*! She is currently a senior in her last year at The University of Iowa. Past credits include *The House of Grateful*, *The Congresswomen*, *Dust Town*, and *14*. Thanks so much to Rinde for this amazing opportunity and to the cast—it's been amazing to work with all of you.



**KENDALL LLOYD** (Actor) is a first year M.F.A. acting student at The University of Iowa and a proud graduate of California Baptist University with a B.A. in theatre. Past roles include Jesus (*Godspell*), Cat (*Seussical*), Charlie Brown (*You're a Good Man...*), and, most recently, Yvonne/Rudy in the University's fall production of *The Book of Liz*. Kendall is honored to be a part of *Eye Piece*. He would like to thank Rinde and the production team for giving him this opportunity, and he'd like to thank his wife Meagan for letting him come out and play with his friends.



**ROSA LOOPS** (*Actor*) is a 6th grader at Kate Wickham Elementary. She enjoys theater, swimming, and biking. She has been acting since she was 5 years old. Rosa is a member of the Iowa City Young Footliters, a youth theater group. Some of her favorites roles have been the monkey in *Aladdin* and the cat in *Thumbelina*. She has also appeared in *Oliver* and *The King and I* with the Iowa City Community Theater. Rosa has recently appeared in *Over There* and *Decline of the Front Porch* at The University of Iowa. She appreciates the opportunity to act and learn with UI students and would like to thank the actors, directors, and the crew for their support.

**KRISTA NEUMANN** (*Actor*) worked professionally in Minneapolis, Chicago, New York, and Los Angeles. She has taught drama and was artistic director of her own theatre company, T4.c. Directing credits include *Godspell*, *Annie*, *Great Expectations*, *42<sup>nd</sup> Street*, *The Sound of Music*, and *The Time of your Life*. Acting credits include *Grace (Annie)*, *Nellie (South Pacific)* with Giorgio Tozzi and John Raitt, *Dorothy (Nite Club Confidential)*, *Genevieve (The Bakers Wife)*, and lead roles in *The Club*, *Canterbury Tales*, *Gay Divorce*, *Ah Wilderness*, and *What's A Nice Country Doing In A State Like This?*. TV credits include *Who's The Boss*, *Joe Bash*, and *Silver Spoons*.



**NOAH PARKS** (*Actor*) is a recent graduate from the UI Theatre Arts Department. He's participated in several mainstage and gallery productions while at the University as well as the Alley Cabaret and Ten Minute Play Festival. He was most recently seen performing *Xmas at the No Tell Motel* a monologue in Riverside Theatre's holiday monologue festival, *Walking the Wire*. He feels extremely proud and lucky to have been able get to know everyone involved in *Eye Piece*. "It was with the utmost reluctance that I found the figure could not serve my purposes. But a time came when none of us could use the figure without mutilating it." —Mark Rothko



**PATRICK REYNOLDS** (*Actor*), a member of the University's graduate program in acting, is making his second appearance on the department's stages. He has previously acted and directed in theatres from London to California, appearing in roles such as



Bottom in *A Midsummer Night's Dream*, Steve in *Jeffrey*, and Steindorff in *Bach at Leipzig*. As a scholar, he maintains active research interests in American vaudeville, working class performance, and theatre for social change. He holds a B.A. in theatre arts from Linfield College, and an A.M. from Brown University and Ph.D. from Cornell University in theatre history and critical theory.



**JOSH SAZON** (*Actor*) describes himself as an "enthusiastic amateur," one whose forays onto the wicked stage have primarily been confined to community theater, with the occasional detour into University productions. He has acted and directed with a number of amateur dramatic groups in the area, including the Iowa City Community Theater, Dreamwell Theater, Rage Theatrics, and the City Circle Acting Company of Coralville. He remains (very pleasantly) surprised to have had the opportunity to exercise his exhibitionist tendencies outside of a karaoke bar, and is well pleased and grateful to have the opportunity to work with this group of dedicated and talented individuals on this production.



**KURT SMITH** (*Actor*) believes in love at first sight. He wants to know if there is love at first touch for the blind. As much as our eyes aid us, they hinder us as well. What if we could all be truly colorblind? Would we find another way to project an unfair hierarchy on people? Would voices provide that scaffold? Would beauty then, be in the ear of the beholder? This is certain: hold on to the ones you love because this all passes in the blink of an eye.



**DAVID TULL** (*Actor*) recently graduated from The University of Iowa with an M.F.A. in theatre arts. It is an absolute joy to work on a production as fresh and brave as *Eye Piece*. Many thanks to Rinde and everyone in this amazing cast, crew, and production team for making it such a memorable experience. Recent roles include Jack in *A Dog's Life* (Riverside Theatre), Father in *Truth and Truth* (UI New Play Festival), The Mercenary in *Kid Simple* (UI Mainstage), and Felix in *Incorruptible* (Iowa Summer Rep). He will also be appearing in The Old Creamery Theatre Co.'s production of *Who's Afraid of Virginia Woolf* later this year.



**SAMANTHA WENDELL** (*Actor*) is a senior at The University of Iowa majoring in theatre, and will be graduating in the spring. She is excited to be a part of this show; "it has been a really great and life changing experience." Some of her favorite theater credits include Ado Annie in *Oklahoma!* and Cinderella in *Into the Woods*. I would like to thank Rinde and everyone involved with this show for taking me on such a wonderful journey.

Raised in Iowa City, **NICOLAS COFFMAN** (*Musician*) is now in his student teaching semester completing his Bachelor of Music in String Bass performance and Music Education at Iowa. Active in the local music scene, Nicolas plays regularly with local symphonies, dance bands, and jazz combos, including Orchestra Iowa and the Noteworthy Music Quartet. After graduating Nicolas intends to student teach in the area, marry his fiancée Joanna in August and take time to develop his interests in computers in music and live electronic music performance.

**KATIE KLOCKE** (*Musician*) is currently a student at The University of Iowa, pursuing degrees in English and violin performance. She is active in the community as a private violin teacher and performs in multiple university ensembles and also with the Waterloo-Cedar Falls Symphony Orchestra. She is a chamber music enthusiast, and she traveled to Bulgaria last summer to study classical repertoire and contemporary Bulgarian chamber music. At the University, she studies chamber music with the Maia Quartet and solo repertoire with Dr. Scott Conklin.

**OLIVIA ROSE MUZZY** (*Musician*) is a junior at The University of Iowa, studying double bass with Volkan Orhon. In her free time, she occasionally breaks out the old squeezebox and entertains her immediate neighbors with Scandinavian folk songs and original compositions.

**JOE PANGANIBAN** (*Musician*) is in his fourth year at The University of Iowa studying under Dr. Dan Moore pursuing a bachelor of music in percussion performance and music education. He has performed with many UI and community ensembles including the Symphony Band, Symphony Orchestra, Percussion Ensemble, Latin Jazz Ensemble, PanAmerican Steel Band, Hawkeye Marching Band, the Iowa City Community Symphony Orchestra, and Pandelerium Steel Band. He has taught at several schools such as Prairie High School, Maine West High School, and Mediapolis High School. He is a Thomas L. Davis Music Scholarship recipient.

# HANCHER CALENDAR

FEBRUARY 2010



FEBRUARY 10  
**An Evening with  
Rosanne Cash**  
The Englert Theatre

FEBRUARY 12  
**Winard Harper Sextet**  
City High School  
Opstad Auditorium



FEBRUARY 21  
**YL Male Voice Choir**  
West High School Auditorium



MARCH 2010



MARCH 4  
**Abraham Inc.**  
Iowa Memorial Union  
Main Lounge



MARCH 26–28  
**Avenue Q**  
U.S. Cellular Center,  
Cedar Rapids